

CERKAMED

medical company



PRODUCT CATALOG



btrPen Broken
Tool
Remover

ø 0,3 mm



ø 0,5 mm



ø 0,4 mm





CERKAMED

MEDICAL COMPANY



Stalowa
Wola

We are
Polish producer
of dental materials



Products sales to over

100 countries!



Quality and **unique design** make our products special



Our medical devices meet the requirements of international standards **ISO 13485:2016**

We sell our products to over 100 countries all over the world, i.a. in **Europe, Asia, Africa, and South America**



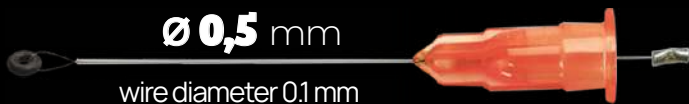
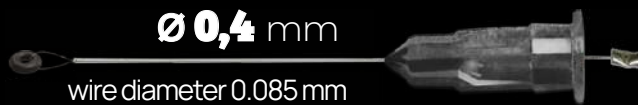
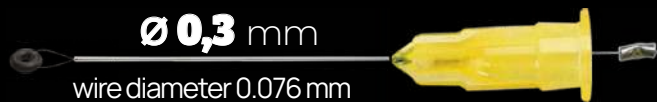
CE

btrPen

 Broken
Tool
Remover

Dental tool for removing broken canal instruments

- + life-long warranty
- + single-tool system for every type of root canal
- + precise grip of the broken instrument
- + thinnest working tip on the market - only \varnothing 0,3 mm


**THREE TIPS
ONE GOAL**

Set includes:

- BTR PEN - 1 pc stainless steel tool
- BTR CALIBRATOR - 1 pc
- BTR TIP \varnothing 0,3 - 5 pcs
- BTR SPRING - 2 pcs soft and hard (third middle spring fixed on the device)
- Silicone BTR O-RING - 3 pcs

Changeable tips available separately, packed in 5 pcs


btr-pen.com

facebook.com/groups/btrpen

Join our fanpage

Seize the impossible!

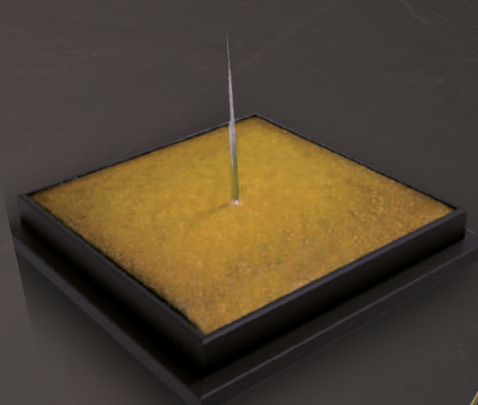
LIMITED *Golden* edition

Join the world's endodontic elite
with limited edition of BTR PEN

Set includes:

- BTR PEN Limited Golden Edition
- 1 pc stainless steel tool
- BTR CALIBRATOR - 1 pc
- GOLDEN BTR TIP - 0,3 mm - 20 pcs
- BTR TIP - 0,4 mm - 10 pcs
- BTR TIP - 0,5 mm - 10 pcs
- BTR SPRING - 2 pcs soft and hard
(third middle spring fixed on the device)
- Silicone BTR O-RING - 3 pcs

Let the
luxury
enter your
dental
office



CE



btr-pen.com

btr

Dental training

1. DIGITAL MICROSCOPE ADSM201

- MINI HDMI input
- MINI USB port
- MICRO SD card input
- light regulation
- LED lightning

2. MICROSCOPE'S INSTRUCTION FOR USE

3. TWO TRAINING TEETH

with pieces of broken endodontic files

HARD 3 deeply placed, blocked pieces of files (requiring processing before removal)

EASY 3 loosely placed pieces of files

Ideal kit for training

the removal of broken endodontic files from root canals

4. SILICONE TRAINING MASS

- transparent and backlit
- 8 pieces of broken endodontic files
- a space to place the training tooth

5. SILICONE MASS STAND

- allows 3D rotation

6. BTR Pen WORK METHODOLOGY

work with BTR Pen step by step

7. ANTI-SLIP MAT

- stability during the work with the kit



**BTR DENTAL
TRAINING KIT**



Also available:

btr gum
Dental training

1. SILICONE TRAINING MASS
with pieces of broken endodontic files

2. SILICONE TRAINING MASS STAND
• allows 3D rotation

3. TWO TRAINING TEETH
with pieces of broken endodontic files
(easy/hard)

4. ANTI-SLIP MAT



**BTR DENTAL
TRAINING GUM**



DRSK

Modified DRSK RCT tooth model

• CAVIPACK •

Temporary filling

NOVELTY



CAVIPACK

Zinc Oxide, Zinc Sulfate,
Calcium Sulfate,
excipients.

CE
2409

Temporary filling
3 x 10 g

- ready to use, zinc oxide and zinc sulfate paste for temporary filling
- it does not contain eugenol
- binds chemically when exposed to moisture
- easy to remove
- radiopaque
- pleasant, rose scent
- economy package **3x10g**



RAINBOW FLOW dentina

LIGHT-CURING FLOW COMPOSITE

- ✓ The **RAINBOW FLOW** dentine composite is intended to:
 - fill the cavities in deciduous and permanent teeth, in class I, II, III, IV and V class cavities according to Black classification
 - sealing fissures.
- ✓ **RAINBOW FLOW** dentine lateral teeth in their natural colour.



A2

filler content 62%

- ✓ **Package contains:**
1 x syringe containing 1 g of preparation + applicators

RAINBOW FLOW

CE
2409

Methacrylate resins

Light-curing flow composite

Available packages:
- syringe 1 g (chosen colour)
+ applicators

Application:



- ✓ Pit and fissure sealing



- ✓ Filling of permanent teeth and milk teeth or protection of root canal orifices

RAINBOW FLOW dentina
compliant with EN ISO 4049



RAINBOW FLOW
Methacrylate resins
SUPER SIX

CE 2409

Light-curing flow composite

Available packages:
- 6 x syringe 1 g
(colour: orange, blue, pink, yellow, green, purple) + applicators



- orange
- blue
- pink
- yellow
- green
- purple



Colour palette for kids



3D Stickers

RAINBOW FLOW
Methacrylate resins

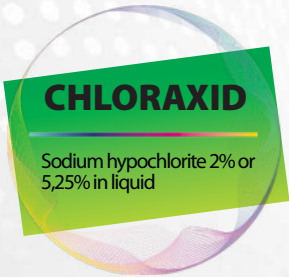
CE 2409

Light-curing flow composite

Available packages:
- syringe 1 g (chosen colour)
+ applicators



1g



CHLORAXID

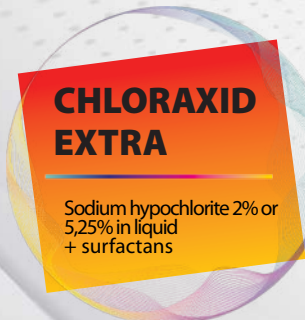
Sodium hypochlorite 2% or 5,25% in liquid

CE
2409

! use with: ENDO-PREP CREAM

PREPARATION for root canals rinsing

Available packages:
CHLORAXID 2% 200 g
CHLORAXID 2% 400 g
CHLORAXID 5,25% 200 g
CHLORAXID 5,25% 400 g



CHLORAXID EXTRA

Sodium hypochlorite 2% or 5,25% in liquid + surfactans

CE
2409

! use with: ENDO-PREP CREAM

PREPARATION for root canals rinsing

Available packages:
CHLORAXID 2% EXTRA 200 g
CHLORAXID 2% EXTRA 400 g
CHLORAXID 5,25% EXTRA 200 g
CHLORAXID 5,25% EXTRA 400 g



ENDO-PREP CREAM

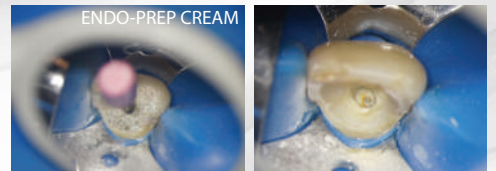
EDTA 15% in cream, urea peroxide

CE
2409

! recommended to use with liquids from CHLORAXID line

CREAM for root canals preparation

Available packages:
ENDO-PREP CREAM 2 ml
ENDO-PREP CREAM 5 ml
ENDO-PREP CREAM 10 ml
ENDO-PREP CREAM MEGA PACK 3 x 10 ml



ENDO-PREP GEL

EDTA 17% in gel

CE
2409

GEL for root canals preparation

Available packages:
ENDO-PREP GEL 5 ml
ENDO-PREP GEL 10 ml



ENDO-SOLUTION

EDTA 17% in liquid

CE
2409

LIQUID for root canals widening

Available package:
ENDO-SOLUTION 200 g



CHLORHEXIDINE DIGLUCONATE 2%

Available package:
CHLORHEXIDINE DIGLUCONATE 2% 200 g



CITRIC ACID 40%

40% citric acid solution

CE
2409

LIQUID for root canals rinsing

Available packages:
CITRIC ACID 40% 200 g
CITRIC ACID 40% 400 g



ISOPROPYL ALCOHOL

Available packages:
ISOPROPYL ALCOHOL 200 g





ENDO-TOP

CE
2409

Endo irrigation needles

Available packages:
ENDO-TOP 100 pcs



ENDO-PACK

LABELLED luer - lock dispensers
of 5 ml - 20 pcs

Available for products:
CHLORAXID 2% EXTRA,
CHLORAXID 5,25% EXTRA,
CHLORAXID 2%,
CHLORAXID 5,25%,
ENDO-SOLUTION,
CITRIC ACID 40%,
CHLORHEKSIDINE DIGLUCONATE 2%.

20 x



**CANAL
DETECTOR**

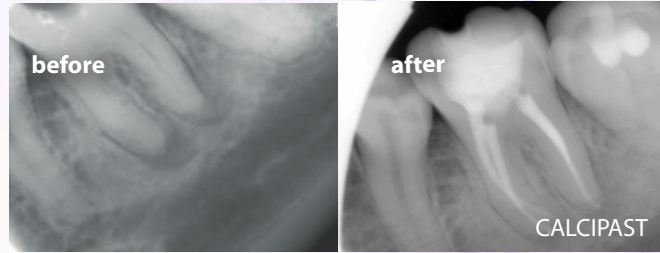
methylene blue

CE
2409

Root canals orifices indicator

Available packages:
CANAL DETECTOR 2 ml





Calcium hydroxide paste for temporary root canal filling

Available packages:
CALCIPAST 2,1 g
CALCIPAST MEGA PACK 4 x 2,1 g

CALCIPAST

Calcium hydroxide

CE
2409

Available packages:
CALCIUM HYDROXIDE 10 g



CALCIUM HYDROXIDE

Calcium hydroxide pure p.a.

Available packages:
IODOFORM 30 g



IODOFORM

Fast-setting root canal repair material

Available packages:
ZINC OXIDE FAST 50 g



ZINC OXIDE FAST

Zinc oxide, excipients

CE
2409

Material for making pastes

Available packages:
ZINC OXIDE 50 g



ZINC OXIDE

Zinc oxide

CE
2409



Oil for making pastes

Available packages:
EUGENOL 10 ml
EUGENOL 20 ml

EUGENOL

Eugenol oil 100%

CE
2409

• short setting time • plasticity • biocompatibility • strength



CE 2409 Biomaterial for filling and rebuilding of root canals

Available packages:
MINI 3 x 0,14 g BIO MTA+ powder, 1 ml liquid
MAXI 10 x 0,14 g BIO MTA+ powder, 2 x 1 ml liquid



CE 2409 Material for filling and rebuilding of root canals

Available packages:
MINI 3 x 0,14 g MTA+ powder, 1 ml liquid
MAXI 10 x 0,14 g MTA+ powder, 1 ml liquid



CE Reusable dental tool for handling and application of prepared measure of MTA+ material

Possible variants:
APPLICATOR FOR MTA+ 0,8 mm
APPLICATOR FOR MTA+ 1,2 mm



CE Reusable dental tools for handling and application of prepared measure of MTA+ material



CE Dosing Block MTA+



MTA SMART SYSTEM

Training set

Endodontic training set for application MTA



Set includes:



SILICONE TRAINING MASS

TRAINING TEETH 5 PCS

SILICONE TRAINING MASS STAND
ALLOWS 3D ROTATION

TRAINING MTA POWDER 5 g

TRAINING MTA LIQUID 3 ml

MEASURING CUP FOR MTA POWDER

PIPETTE FOR MTA LIQUID APPLICATION



SLIDE



DRSK Modified DRSK RCT tooth model

5 variants available



2633-101-PCL

Maxillary first molar
3 canals, 3 roots
Perforation of the bottom of the chamber, lateral wall perforation of the palatal root



2111-1A2-PCL

Maxillary central incisor
1 canal, 1 root
Incomplete root development



2633-102-PCL

Maxillary first molar,
3 canals, 3 roots,
perforation of the pulp chamber floor, external apex resorption



3623-101-PCL

Mandibular first molar
3 canals, 2 roots
perforation of the pulp chamber floor



3111-1A1-PCL

Mandibular central incisor
1 canal, 1 root, anterior root wall perforation



Also sell separately!

SYNTEX

CE
2409

Root canals filling and sealing material

Available packages:
syringe of 10 g of the preparation
+mixing tip
+mixing papers



GUTTA PERCHA POINTS

CE
2409

Hand rolled gutta percha points

Available packages:
GUTTA PERCHA 2% 120 pcs marked
GUTTA PERCHA 4%, 6% 60 pcs marked
GUTTA PERCHA Pro Taper 60 pcs marked
GUTTA PERCHA 2% ROUND PACKAGE 240 pcs. marked
GUTTA PERCHA 4%, 6% ROUND PACKAGE 240 pcs marked



Color chart and sizes:

■ 08	■ 10			
□ 15	□ 45	□ 90		
■ 20	■ 50	■ 100		
■ 25	■ 55	■ 110		
■ 30	■ 60	■ 120	■ F1	■ F2
■ 35	■ 70	■ 130	■ F3	■ F4
■ 40	■ 80	■ 140	■ F5	

GUTTA PERCHA PLUGGER

CE

Reusable dental tool for vertical condensation of gutta-percha

Available packages:
GUTTA PERCHA PLUGGER 1 pc
GUTTA PERCHA PLUGGER 4 pcs





Oil for dissolving gutta-percha

Available packages:
EUCALYPTOL 10 ml
pipettes for application 5 pcs

EUCALYPTOL

Eucalyptus oil 100%

CE
2409



Oil for dissolving gutta-percha

Available packages:
ORANGE GUTTANE 10 ml
pipettes for application 5 pcs

ORANGE GUTTANE

Orange oil 100%

CE
2409



Available packages:
METHYLENE CHLORIDE 10 ml

METHYLENE CHLORIDE

Dichloromethane pure p.a.

ABSORBENT PAPER POINTS

CE
2409

Hand rolled absorbent paper points

Available packages:
ABSORBENT PAPER POINTS 2% 200 pcs marked
ABSORBENT PAPER POINTS 4%, 6% 100 pcs marked
ABSORBENT PAPER POINTS ProTaper 100 pcs marked
ABSORBENT PAPER POINTS 2%
Round package 400 pcs marked
ABSORBENT PAPER POINTS 4%, 6%
Round package 240 pcs marked 240 pcs



ENDO-ASPIRATOR

for removal liquids from the root canal by aspirating



ENDO aspirator **PRO**[®]

for removal liquids from the root canals

Possible variants:
ENDO-ASPIRATOR PRO
ENDO-ASPIRATOR PRO Golden Version
PACKAGE INCLUDES:
HANDLE - 1 pc
ELASTIC APPLICATOR - 10 pcs
CONNECTOR - 3 pcs
LUER LOCK HOSE - 5 pcs
MAGNET - 5 pcs
RAMROD FOR CLEANING THE ENDO-ASPIRATOR PRO - 1 pc



ADDITIONAL ACCESSORIES

PACKAGE INCLUDES:
LUER LOCK HOSE - 5 pcs
CONNECTOR - 1 pc





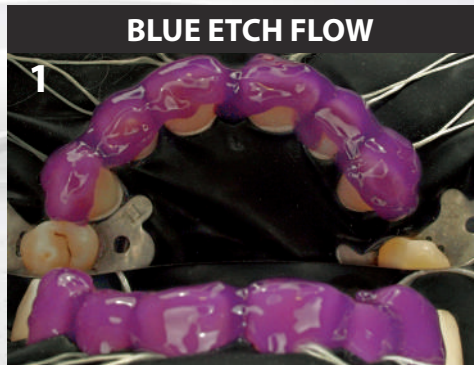
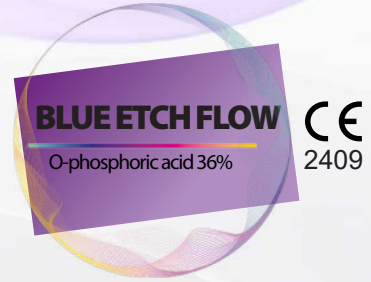
Dental etchant

Available packages:
 BLUE ETCH 2 ml
 BLUE ETCH 10 ml
 BLUE ETCH 50 ml
 BLUE ETCH MEGA PACK 3 x 10 ml
 BLUE ETCH MONSTER PACK 10 x 2 ml

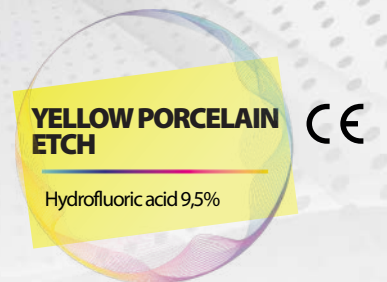


Flowable dental etchant

Available packages:
 BLUE ETCH FLOW 2 ml
 BLUE ETCH FLOW 10 ml
 BLUE ETCH FLOW 50 ml
 BLUE ETCH FLOW MONSTER PACK 10 x 2 ml



Available packages:
 Syringe 2 ml



Available packages:
 Syringe 2 ml



ALUSTAT FOAM

Aluminium chloride 20%

CE
2409

FOAM for staunching the bleeding

Available packages:
ALUSTAT FOAM 0,8 g
ALUSTAT FOAM MEGA PACK 4 x 0,8 g



ALUSTAT

Aluminium chloride 25%

CE
2409

LIQUID for staunching the bleeding

Available packages:
ALUSTAT 10 g



ALUSTAT GEL

Aluminium chloride 25%

CE
2409

GEL for staunching the bleeding

Available packages:
ALUSTAT GEL 5 ml
ALUSTAT GEL 10 ml



TCA DENT

Trichloroacetic acid 35%

CE

Preparation for local cauterisation the mucous membranes

Available packages:
dropping bottle 10 ml



BEST-CORD NANO

Polyester/Polyamide yarn conjugated.
Aluminium chloride impregnated:
000.0/000/00/0: 0,5 ± 0,3 mg/inch
1/2: 1,0 ± 0,4 mg/inch

CE
2409

Knitted retraction cords, 254 cm length



6 SIZES:

- 000.0
- 000
- 00
- 0
- 1
- 2



Length matters
- 254 cm



RETRACTION CORD PACKERS

CE

3 TYPES



Tools for packing retraction cords in the gingival pockets

- Possible variants:
RETRACTION CORD PACKERS
1. UNIVERSAL
 2. ROUND 1,5 mm
 3. ROUND 3 mm

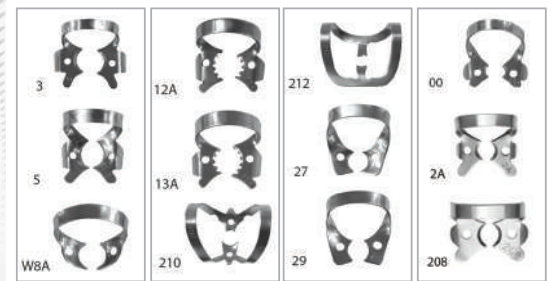
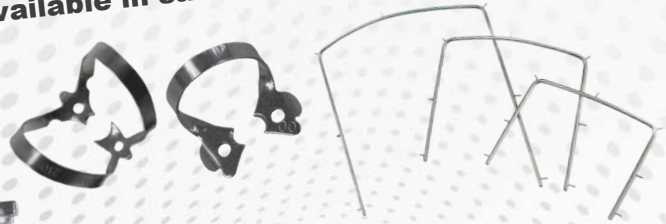




Each item of Rubber dam Set available

separately!

12 types of clamps
Also available in satin version



Tools for rubber dam

- Set includes:
 RUBBER-DAM PUNCH
 CLAMPS FORCEPS
 RUBBER-DAM FRAMES (3 sizes)
 THE SET OF CLAMPS
 BASE FOR CLAMPS



- Flat jaws for small lower molars (No 3).
- Festooned wings for large upper molars.
- Wings fit the gum curvature (No 5).
- Festooned jaws for molar's roots (No W8A).
- Serrated jaws for lower right and upper left molars (No 12A).
- Serrated jaws for lower left and upper right molars (No 13A).
- Small and large jaw for anteriors (No 210).
- Flat jaws for anteriors (No 212).
- Rounded jaws for premolars (No 27).
- Rounded and at jaws for premolars (No 29).
- Small jaws and high bow for anteriors and premolars (No 00).
- Wings, flat and large jaws for premolars (No 2A).
- Festooned wings, flat jaws for large premolars (No 208).



Tools for rubber dam Start Pack

- Set includes:
 RUBBER DAM PUNCH
 CLAMPS FORCEPS
 RUBBER DAM FRAME (M SIZE)
 CLAMPS NO 12A, 13A, 208, 210



ADDITIONALLY RECEIVE for free!

- RUBBER-DAM (medium plain)
- RUBBER-DAM TEMPLATE with pen
- RUBBER-DAM LIQUID
Light-cured rubber dam liquid
- RUBBER-DAM NAPKINS
- RUBBER-DAM CORD
Dental dam stabilizing cord (medium)





Light-Cured
RUBBER-DAM liquid

Available packages:
RUBBER-DAM LIQUID 1,2 ml
RUBBER-DAM LIQUID
MEGA PACK 4 x 1,2 ml

**RUBBER-DAM
LIQUID**

urethane resins,
inorganic fillers



Available package:
36 pcs
Available variants:
- plain BLUE: medium 0,18 mm
or heavy 0,22 mm
- mint GREEN: medium 0,18 mm
or heavy 0,22 mm
- mint BLACK: medium 0,18 mm

RUBBER-DAM



Available packages:
RUBBER-DAM NAPKINS 36 pcs

**RUBBER-DAM
NAPKINS**



Dental dam stabilizing cord

Available packages:
RUBBER-DAM CORD fine
RUBBER-DAM CORD medium
RUBBER-DAM CORD thick

Package containing 1,2 m of rubber dam cord

**RUBBER-DAM
CORD**

- Available colours:
- black
 - purple
 - blue
 - red
 - green
 - yellow
 - white



Silicone rings for marking of instruments
in stomatology

Available packages:
SILICONE RINGS 20 pcs
SILICONE RINGS 100 pcs

**SILICONE
RINGS**



GLUCOSITE

aqua, chlorhexidine digluconate, alcohol, hydrogen peroxide

LIQUID for gingival pockets

Available packages:
 GLUCOSITE 2 ml
 GLUCOSITE 50 ml
 GLUCOSITE MONSTER PACK
 10 x 2 ml



GEL for gingival pockets

Available packages:
 GLUCOSITE GEL 2 ml
 GLUCOSITE GEL 50 ml
 GLUCOSITE GEL MONSTER PACK
 10 x 2 ml



GLUCOSITE GEL

aqua, glycerine, chlorhexidine digluconate, methylcellulose, alcohol, hydrogen peroxide

INOX

propanotriol (glycerol), Ph Eur purified water, gel base



Gel promoting complete polymerisation of dental composites

Available packages:
 INOX 2 ml
 INOX MEGA PACK 4 x 2 ml



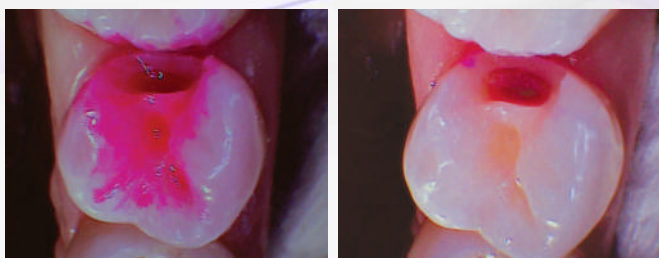
RED DETECTOR

Rhodamine



Caries detector

Available packages:
 RED DETECTOR 2 ml



PULP SPRAY



SPRAY for pulp vitality testing

Available packages:
 PULP SPRAY 200 ml

Aroma:

- mint
- orange



elastic applicators

Elastic applicators for liquids, creams, pastes, gels

Available packages:
20 pcs

APPLICATORS

for application



◀ **ELASTIC APPLICATOR 27G straight**
length: 41 mm
diameter: 0,4 - 0,2 mm



◀ **ELASTIC APPLICATOR 27G bent**
length: 41 mm
diameter: 0,4 - 0,2 mm



◀ **ELASTIC APPLICATOR 25G bent**
length: 41 mm
diameter: 0,5 - 0,3 mm



◀ **ELASTIC APPLICATOR 25G long bent**
length: 56 mm
diameter: 0,5 - 0,3 mm



◀ **ELASTIC APPLICATOR 22G curve**
length: 32,3 mm
diameter: 0,7 - 0,5 mm

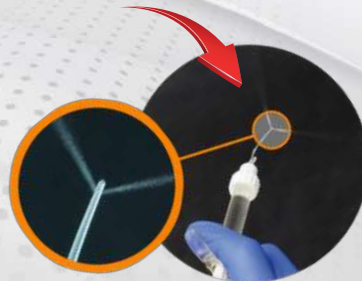


◀ **ELASTIC APPLICATOR 21G long bent**
length: 88 mm
diameter: 0,8 - 0,6 mm



◀ **ELASTIC APPLICATOR 27G bent with two side holes**
length: 35 mm
diameter: 0,4 mm

ADDITIONAL ACCESSORIES



Available packages:

1. ELASTIC APPLICATORS
10 pcs
ELASTIC APPLICATORS
20 pcs

2. GEL APPLICATORS
20 pcs
GEL APPLICATORS
50 pcs

3. BRUSH APPLICATORS
10 pcs
BRUSH APPLICATORS
20 pcs

4. APPLICATORS FOR ALUSTAT FOAM
10 pcs

5. APPLICATORS FOR SYNTAX
5 pcs

6. PAPER FOR PRODUCT MIXING
30 pcs

7. APPLICATION PIPETTES
5 pcs



for suction



PERFECT PROTECTION

PROTECTIVE VISORS



Available colours:

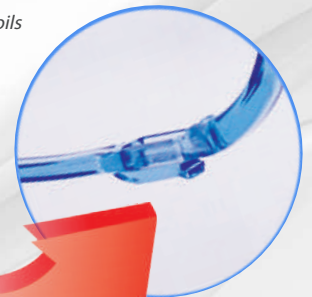
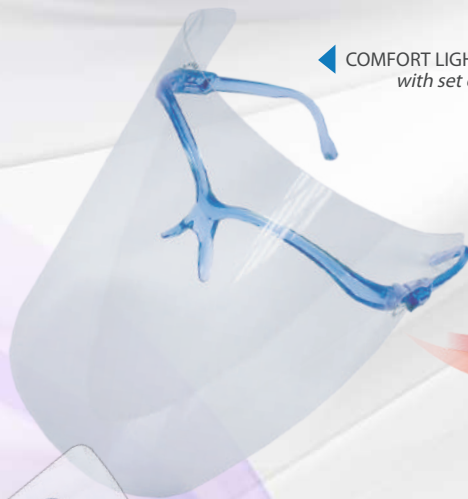
- green
- blue
- pink
- beige
- white
- transparent



◀ COMFORT
with set of foils



◀ COMFORT LIGHT
with set of foils



SET of removable protective foils

Available packages:
4 x RELAX (0,175 mm)
5 x STANDARD (0,125 mm)
4 x LIGHT RELAX (0,175 mm)

ANTISTATIC FOILS



COMFORT OF WORK

PROTECTIVE VISORS ATTACHED TO GLASSES

CE



Packing includes:
20 pcs OF DISPOSABLE PADS

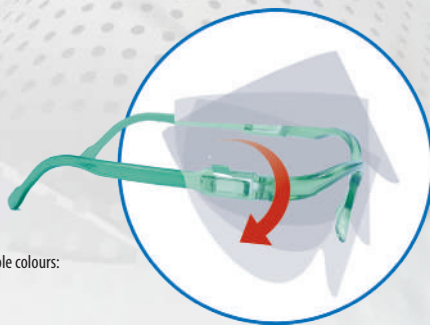
PROTECTIVE PADS FOR A PATIENT

CE

ONE SIZE

PROTECTIVE SHIELDS FOR A PATIENTS

CE



Packing includes:
Shield frame with plastic hooks
+ set of exchangeable foils - 8 pcs

- Available colours:
- green
 - blue
 - pink
 - beige
 - white
 - transparent



GLASSES FOR POLYMERIZATION

CE





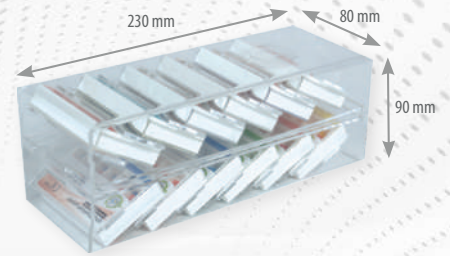
Line of endodontic organizers

Available in colors*:

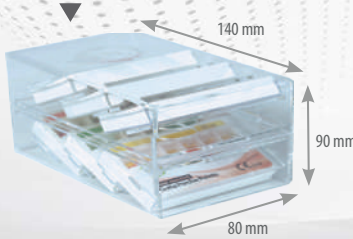
- green
- blue
- transparent

*ENDO-STATION GO GUTTA BOX available only transparent

ENDO-STATION GO
GUTTA BOX 2X6



ENDO-STATION GO
GUTTA BOX 2X3



ENDO-STATION GO MINI CE

Available in colors:

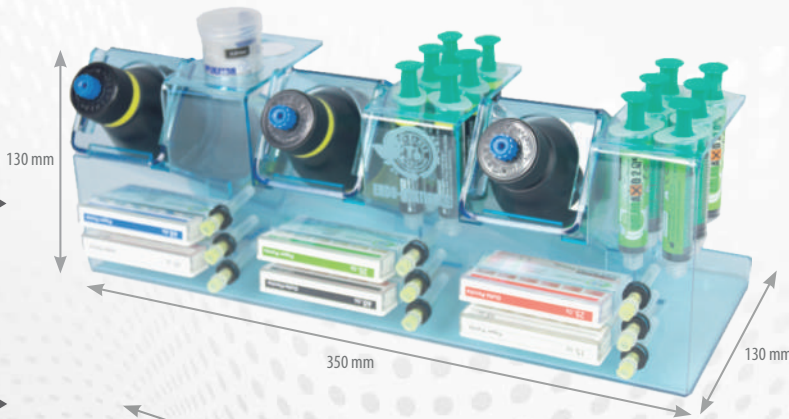
- green
- blue
- transparent



DENTAL CONTRASTOR CE

- universal
- single use
- flexible

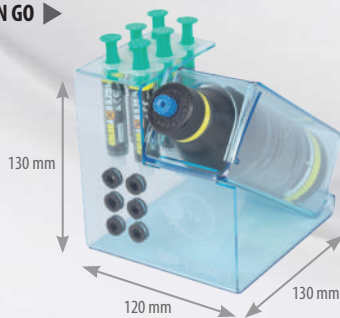
ENDO-STATION GO
EASY 3



ENDO-STATION GO
GUTTA BOX 12



ENDO-STATION GO
EASY 2



Perfect picture!



15 pcs
Anti-reflex



Protective enamel with fluoride for children

Available packs:
 - FLUOR DEFENDER MINI
 3 x 1 ml of preparation
 + set of applicators
 - FLUOR DEFENDER MAXI
 10 x 1 ml of preparation
 + set of applicators

FLUOR DEFENDER CE
 0,1% fluorosilan (1600 ppm F)
 HEMA



MARKETING MATERIALS FOR PATIENT



- Available packages:
- 3D STICKERS 10 pcs, 50 pcs
 - LEAFLET „ROOT CANAL TREATMENT” DEDICATED FOR PATIENT 20 pcs, 50 pcs, 100 pcs
 - PUPPET 1 pcs, 2 pcs, 3 pcs
 - BOXES FOR MILK TEETH 5 pcs
 - DIPLOMA „BRAVE PATIENT” mix 20 pcs
 - GUESSING GAMES FOR A BRAVE PATIENT 20 pcs
 - TEETH BRUSHING CALENDAR for kids
 Set included: teeth brushing calendar, diploma, stickers, magnet





Specialised Mouthwash

Available packages:

- Start Pack concentrate in syringe 50 ml + bottle
- + dispenser
- concentrate in syringe 50 ml

Two variants available:

- MINT
- ORIGINAL



6in1



**JOIN TO
CERKAMED IN:**



PPH CERKAMED

Wojciech Pawłowski



ul. Kwiatkowskiego 1
37-450 Stalowa Wola
Poland



+48 15 840 08 09
+48 15 842 35 85, int. 809
+48 785 665 505



export@cerkamed.pl



www.cerkamed.com